



THE NEW **UC-5000**

A MASTERPIECE IN MOBILITY

- › HOSPITALS
- › URGENT CARES
- › IMAGING CENTERS

TURN YOUR RADIOLOGY ROOM INTO A **PROFIT CENTER** WITH THE **UC-5000** DIGITAL X-RAY SYSTEM

The UC-5000 is a portable unit designed to specifically address the issues many facilities have with having a dedicated "X-ray ONLY" room. The UC-5000 is flexible, powerful, and compact, yet does not require a dedicated exam room to operate. A standard 115V outlet gets you powered up, and potentially NO lead lining of the room is needed - Saving you thousands of dollars in site preparation costs.

The system provides everything you need to begin taking X-rays immediately. The on-board computer with anti-microbial touchscreen, interfaces with the included wireless 14x17 Cesium flat panel detector, providing you with state-of-the-art image quality and reduced patient dose.

Essentially, the UC-5000 allows for an extra exam room...

What can an extra exam room do for your practice?

*Increased workflow efficiency
Decreased patient wait times
Flexible patient flow
Increased patient satisfaction*

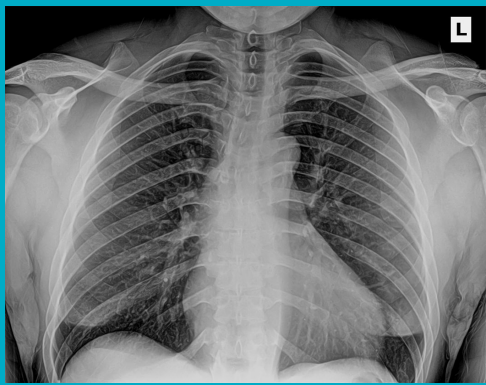
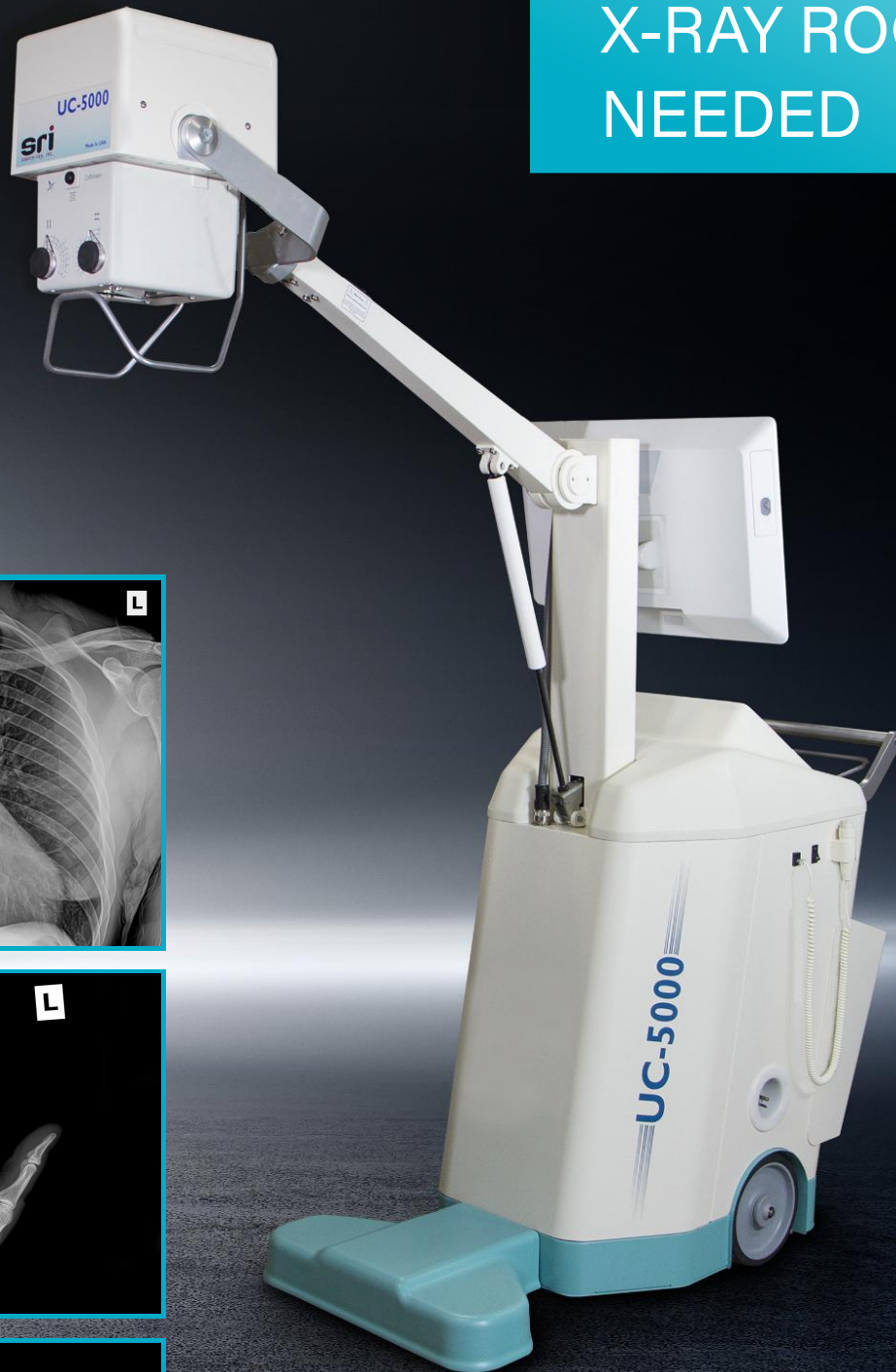
KEY ADVANTAGES INCLUDE

- › High quality diagnostic X-ray images
- › Minimal space requirement (as little as 8' x 10')
- › No special power requirements (standard 115V)
- › Significant savings in initial cost & service expenses
- › Fully touchscreen, direct digital, and wireless
- › Full turnkey - a "Plug and Play" X-ray solution
- › Minimal/no site preparation expense



UNSURPASSED IMAGE QUALITY.
SMALL MOBILE UNIT.

NO
DEDICATED
X-RAY ROOM
NEEDED



SPECIFICATIONS

Generator

- High frequency resonant inverter (5kW)
- Closed loop regulation
- Input Voltage: 115VAC, 60 Hz / 230VAC, 50 Hz
- kVp Range: 40 – 110 adjustable in 1 kV increments
- mAs Range: 0.1 – 200 mAs
- Indicators: Digital display of kVp, mAs and Exposure Time X-Ray, Ready, mA Station and Fault indicators
- Minimum Inherent Filtration:
 - 3.6 mm of aluminum equivalent at 100 kVp
 - 3.9 mm of aluminum equivalent at 110 kVp
- Exposure Switch: Detachable two-position

Collimator

- Laser Crosshairs for center locator
- 24VDC LED Lamp
- Retractable Tape Measure for SID Measurement
- Inclinator for Angle Measurement

X-Ray Tube

- Stationary Anode: 130 kVp
- Target Angle: 15°
- Target Material: Tungsten
- Focal Spot: 1.2 mm

Computer

- AIO 22" Touch Screen Medical Grade
- Intel i5, 4GB, 120SSD
- Microsoft Windows 7 Professional 64bit
- Internal Battery, 60 Minute run time
- Intel Wireless-N 7260AC
- EN60601-1 Medical Certified
- UL60950, FCC Class B

Wireless Panel Case

- Splash-proof Housing
- Convenient carry handle
- Removable back for easy battery changes

Wireless Digital Panel

- Amorphous Silicon
- Cesium Scintillator
- Cassette Sized: 14 x 17
- Weight: 7.7 lbs
- Construction: Carbon Fiber
- Pixel Matrix: 2304 x 2800
- Resolution: 3.3 lp / mm
- Battery: Lithium Ion
- Single Bay Battery Charger

Acquisition Workflow Management

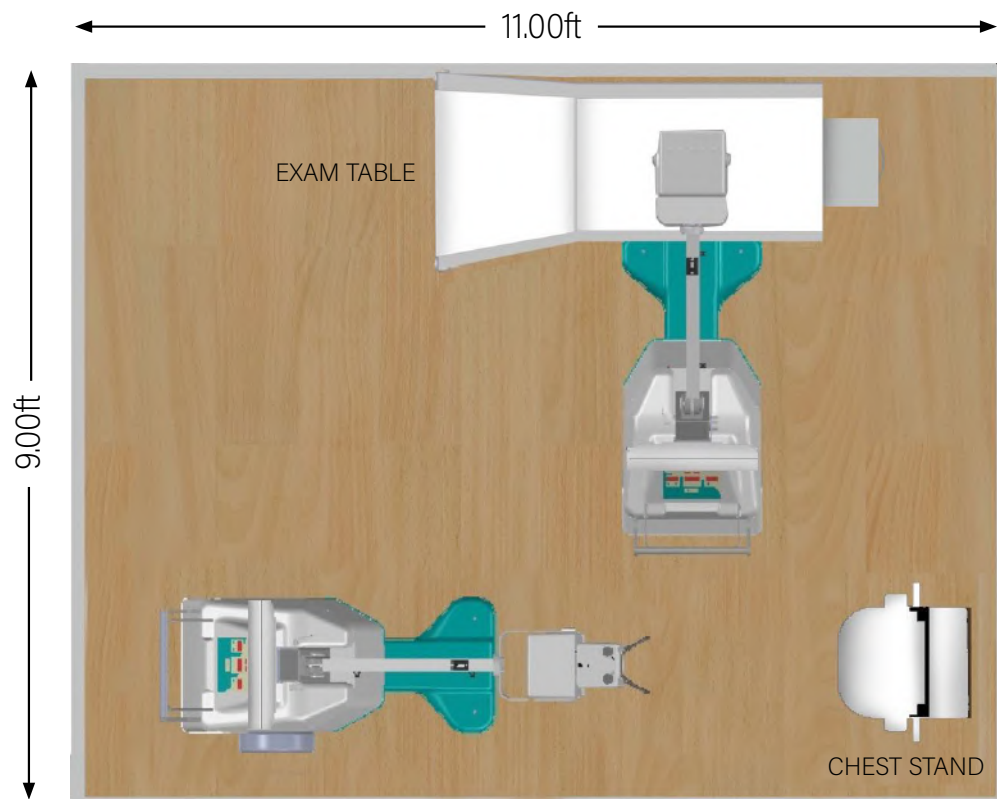
- Streamline based workflow optimal for maximum throughput
- Automatic setting of acquisition parameters according to body part
- Patient data entry: manually or automatically from the DICOM worklist (MWL HL7 May be required)
- Urgent patient registration
- Preview image typically within 4-5 seconds after exposure
- Exam specific image processing for optimized image quality
- Automatic backup of operator accepted images.
- Review & Processing
- Patient review
- Window/Level, Reverse Black/White (Window polarity inversion)
- Image rotation
- Electronic zoom with pan & scroll capabilities
- Magnifying glass
- Multi-scale contrast enhancement and Dynamic Range
- Electronic shutter for masking of image (cropping)
- Multi-format display (for printing)
- DICOM Store: Interface to DICOM storage servers
- DICOM Print
- DICOM HIS/RIS MWM: Interface to Hospital/Radiology Information System's Modality Worklist

Complies with CFR 21 subchapter J



Specifications are subject to change without notice

TYPICAL UC-5000 ROOM CONFIGURATION



Contact Us

Mobile Digital Imaging

P: 888-274-3588

F: 888-516-3377

sales@mobiledigitalimaging.com

www.mobiledigitalimaging.com

